

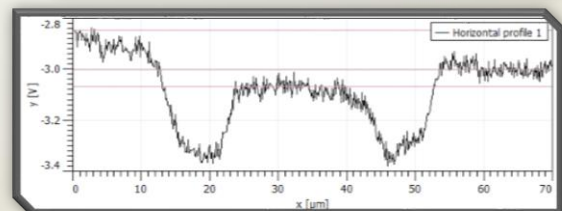
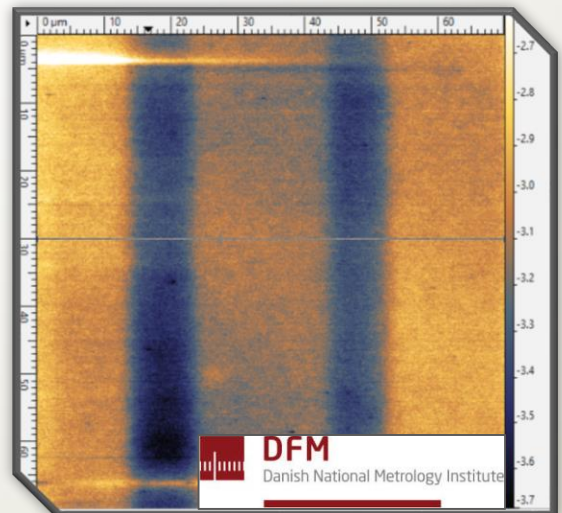
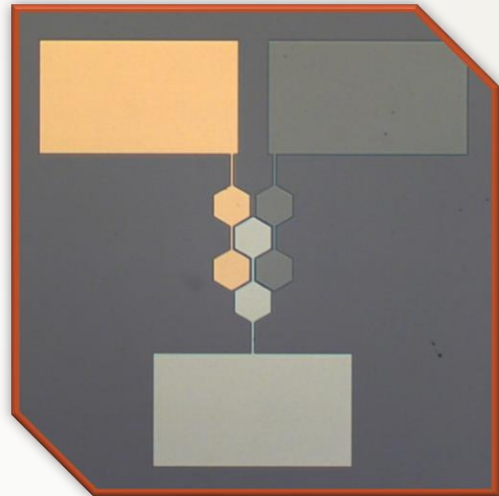
# ConScience AB: AFM/KPFM Calibration Standard

## About Our Product

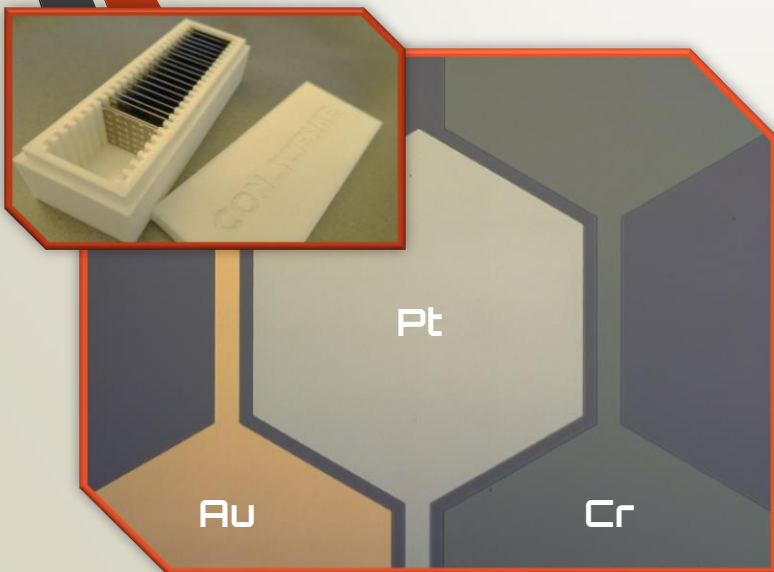
We offer AFM/KFM calibration standards which allow the user to maximum their image quality. Our designs allow for easy connections and a variety of potential measurement directions with different work functions to ensure maximum resolution.

## Highlights

- ❖ 3 metal work functions
- ❖ Variety of patterns
- ❖ Multi-metal scan directions
- ❖ Easy to connect
- ❖ Custom client-specified designs
- ❖ Custom packaging



KPFM (courtesy of DFM)



## Contact Information

con-science.se  
+46 (0)738 92 08 67  
info@con-science.se

### Related Grant

- Vinnova (2019-03545)
- Eurostars (E! 113474)